

THE ALBUM PAGE

September 2011

President: Eric Hummel

Volume XXXIV, No. 9, Whole No. 322

Vice President: Bill Seymour

The Album Page Receives a Gold Award

See Page 9

OSS Committees: Dinner & Planning Session

See Page 3

Summer Frolic - Summer Pot Luck Picnic

See Page 15

Cover of The Month



Senator Mark O. Hatfield Cover

Mailed From Hatfield MO with Oregon Statehood Stamps

See Page 10

THE OREGON STAMP SOCIETY

Founded in 1916.

APS Chapter #0068-008234

Member of the Northwest Federation of Stamp Clubs

www.OregonStampSociety.org



OSS Board of Directors

President:

Eric Hummel 503-283-4770
email => ephummel@easystreet.net

Vice Pres.:

Bill Seymour 971-244-2278
email => billsey@seymourfamily.com

Secretary:

Jerry Rottman 503-929-4389

Treasurer:

Steve Brandt (—————)

OSS Directors 2010-2011

Ula Mae Neligh
Paul Malan
Larry Spray

OSS Administration

Collectors Corner Manager:

————— (—————)

Property Manager:

Ula Mae Neligh 503-284-4294

Rose City Stamp Fair Manager:

Bob Burger 1-503-390-9074

Sales Manager:

Jim Correy (Tel. # Private)

Album Page Editor:

Eric Hummel 503-283-4770

APS Representative:

Len Lukens (—————)
email => llukens@easystreet.net

Oregon Stamp Society

4828 NE 33rd Ave
Portland OR 97211-7058

OSS Message Phone Number:
503-284-6770

The Album Page is published 12 times per year by the Oregon Stamp Society. A subscription to this nationally recognized, award winning newsletter is included as a part of the annual membership dues. For a membership application, write to the OSS at the above address.

Opinions expressed in features and columns in this publication are solely those of the authors and do not represent those of the Society. The OSS cannot be responsible for the accuracy of any information presented herein.

ABOUT THE CLUB

Regular meetings are held in the OSS Building, 4828 NE 33rd Ave. on the second and fourth Tuesdays of each month at 8 PM, unless otherwise stated in the monthly calendar.

The ***Rose City Stamp Fair*** is an official OSS function and is held at the OSS Building on the second Saturday of each month from 10 AM to 4 PM.

The ***Stamp Collector's Corner*** also is an official OSS Bourse, and is held on the fourth Saturday of each month from 10 AM to 4 PM.

Visitors Are Always Welcome

----- Contents -----

Articles

| | |
|---|-------|
| Program Notes - Lighthouses and Philately | 4-6 |
| OSS & NPL Fund Raising Sales and Work Party | 7 |
| APS Awards The Album Page a Gold Award | 9 |
| The Dumpster Diver Chronicles #8 | 10-11 |

Columns

| | |
|---|-------|
| OSS News - Committees: Dinner & Planning Session | 3 |
| Cover of The Month - Sen. Hatfield - Hatfield MO. | 8 |
| Closed Albums - Terry Ferguson | 8 |
| PIPEX 2011 - PIPEX Wants You | 8, 12 |
| Salem and Eugene Stamp Show Weekend | 14 |
| Calendar - September Events and Local Stamp Shows | 14-15 |
| Northwest Philatelic Library | |

| | |
|--------------|----|
| Book Reports | 13 |
|--------------|----|

Advertisers

| | |
|---------------------------------|----|
| Harmer Schau | 12 |
| Unique Estate Appraisals | 13 |
| Brookman Stamps / Michael Jaffe | 16 |

OSS NEWS

September 14th 2011

OSS Committees

Dinner and Planning Session

**Pizza and Salad Dinner at the Clubhouse
6 PM**

**Planning and Goal Setting Workshop
6:30 to 8:00 PM**

For All Committee Chairs & Members

Program Notes - August 23rd 2011 **Lighthouses and Philately** *Presented by Steve Brandt*

Lighthouses date back to the time of Ancient Egypt. A lighthouse in Alexandria is listed as one of the Seven Wonders of the Ancient World. The first lighthouse in the United States was built in Boston Harbor in 1716. One of the first acts of the first session of the first Congress of The United States, in 1789, was to create the Lighthouse Service. The Lighthouse Service was made a part of the United States Coast Guard in 1939. Lighthouses have figured prominently as Aids to Navigation in our Country's history ever since.



Lighthouse at Alexandria

First Lighthouse Postage Stamps in North America:

Newfoundland issued the first lighthouse postage stamp in North America. The 3 cent stamp featuring Cape Bonavista was issued in 1897. The 20 cent value of the 1932 definitive set features the Cape Race Lighthouse. A similar 20 cent stamp was issued to commemorate the Coronation of King George VI in 1937. Newfoundland did not become a part of Canada until 1949.



First Canadian Lighthouse Issues:

Canada has issued 15 lighthouse postage stamps. The first issue was a 32 cent se-tenant set in 1984 featuring Louisbourg in Nova Scotia, Fisgard guarding Victoria Harbor, Ile Verte in Quebec and Gibraltar Point in Ontario.



The next year Canada followed up the 1984 issue with a 34 cent se-tenant set featuring Sisters Island in the Inside Passage, Pelee Passage in Lake Erie (near Detroit), Haut-Fond Prince on the St. Lawrence River (in Quebec), and Rose Blanche on Cains Island in Newfoundland.

United States Lighthouse Issues:

The United States did not issue a stamp featuring a lighthouse until 1970. This stamp, Scott #1391, commemorated the Maine Statehood Centennial. The subject of this issue is a painting of the "Two Lights" Lighthouse near Portland by Artist Edward Hooper. The painting now hangs in the Metropolitan Museum of Art in New York City. One of the best examples of U.S. Lighthouses on stamps is the 2 cent se-tenant block of 4 of the Cape Hatteras Lighthouse in North Carolina. This issue is part of the 1972 National Parks Centennial series. Cape Hatteras is one of the best known Lighthouses in the United States. It was recently moved further inland to protect it. It has been the subject of two U.S. and several Foreign postage stamps.



In April 1990, the United States issued its first se-tenant strip of 5 Lighthouses in the form of a booklet pane. This set of 25 cent denomination stamps features Admiralty Head on Whidbey Island, Cape Hatteras North Carolina, West Quiddy Head in Maine, American Shoals in the Florida Keys and Sandy Hook New Jersey. The West Quiddy Head Lighthouse is very close to the Canadian border. The Sandy Hook Lighthouse has also been featured on two US postage stamps.



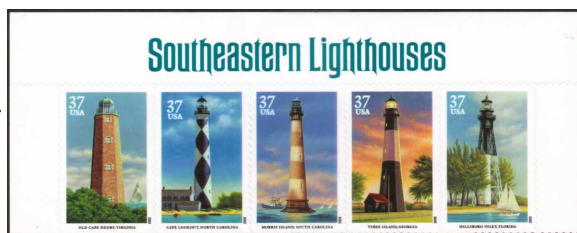
The second set of Lighthouse stamps, also in a booklet pane, was released in June of 1995. This set of stamps features Lighthouses of The Great Lakes. Split Rock on Lake Superior (in



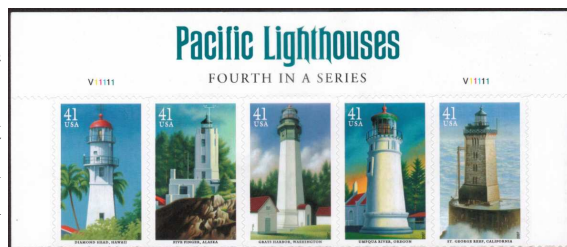
Lighthouses and Philately - Continued

northern Minnesota), St. Joseph on Lake Michigan (in Michigan), Spectacle Reef on Lake Huron (in Michigan), Marblehead on Lake Erie (in Ohio) and Thirty Mile Point on Lake Ontario (in New York). Howard Koslow designed both of these two sets.

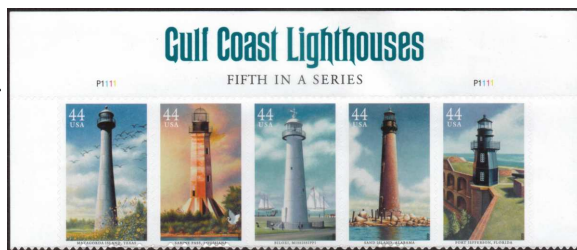
The 3rd, 4th and 5th sets in this series have been issued in sheets of 20. The third set released in 2003 commemorates Lighthouses in the Southeastern part of the United States. Cape Henry in Virginia, Cape Lookout and Morris Island in North Carolina, Tybee Island in Georgia and Hillsboro inlet in Florida. the Cape Henry Lighthouse was the first Lighthouse to be built by the United States after the Revolutionary War.



The Fourth set in the series, released in 2007, salutes Pacific Coast Lighthouses. Featured in this set are Diamond Head in Hawaii, Five Finger in Alaska, Gray's Harbor in Washington, Umpqua River in Oregon and St. George's Reef in California. Caroline and I personally attended the First Day of Issue ceremony at the Gray's Harbor Lighthouse.



The Fifth and most recent set was issued in 2009 and features Gulf Coast Lighthouses. Matagorda Island in Texas, Sabine Pass in Louisiana, Biloxi Mississippi, Sand Island Alabama and Fort Jefferson in Florida.



Fifth Saturday in July Fund Raising Sales and Work Party

By all accounts the OSS and NPL Fund Raising sale on July 30th was a well attended success. The Sales raised more than \$1000 for NPL and more than \$300 for OSS. All three rooms were overflowing with stamps, collections, covers, philatelic literature and FREE stuff. The picture below shows several philatelists intently searching for Treasures and Wheelin-n-Dealin with Larry over their finds.



Treasurer seekers: Rick, Larry, Henry, Joe, Pete,
Larry, Lionel and Bob.

For all that was sold - much remains - and much more is being donated to NPL. The next Sale (as yet unscheduled) should have something for just about every collecting interest.

Landscape Work Party Volunteers

On the same day as the sale, several individuals gave of their time to tidy up the edges (and much more) of the landscape around the Clubhouse. Many thanks to Bill Nielsen, Win Bohme, Paul Malan, John Lowell, Steve and Caroline Brandt for all their hard work - it is certainly much appreciated.

Cover of The Month

by Len Lukens

Hatfield MO Cover:

This cover from Hatfield Mo. addressed to Senator Mark O. Hatfield from Oregon raises a few comments. First we all know about the feud between the Hatfield's and McCoy's. Question: did Mark belong to the original Hatfield's, or was just lucky to get the last name. Today Hatfield Mo. is an unincorporated community with a discontinued post office, mail service is from Grant City Mo. Mark Hatfield is retired now living in Oregon. This cover is in my collection of covers under odd cancels or related items.

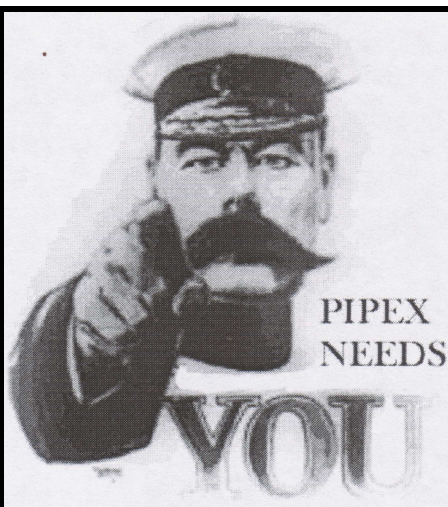
Ed. note: Sen. Hatfield passed away August 7th 2011. He had become increasingly frail in recent years and died at a Portland residence. Former Governor Hatfield was the longest serving U.S. senator in Oregon history, serving five terms from 1967 to 1997.

Closed Albums



Floyd Terry Ferguson
1932 - 2011

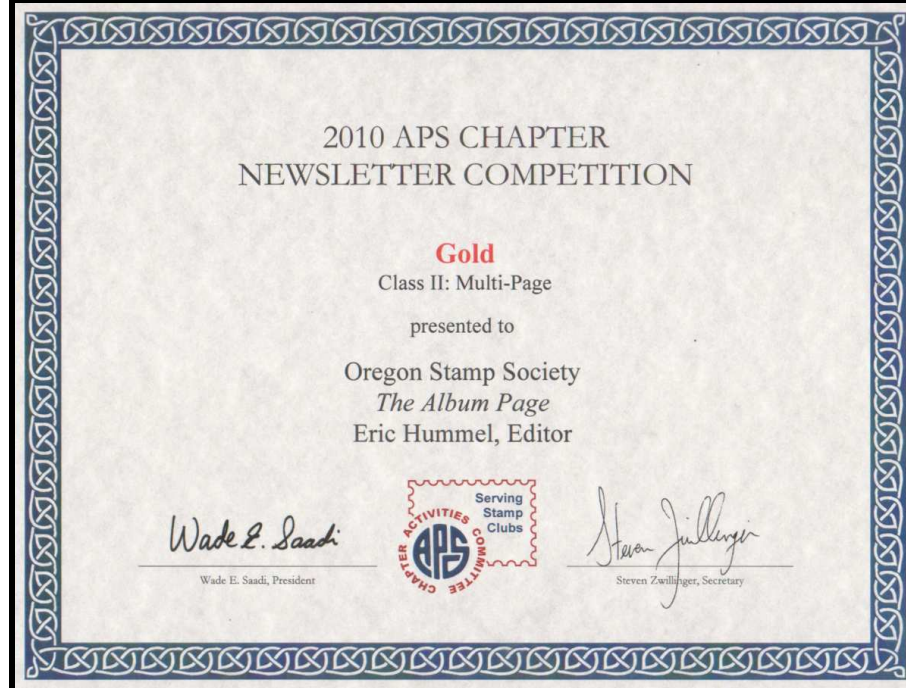
A candid relaxed photo without a stamp in sight. An avid fisherman and a very well liked and respected Stamp Dealer. The July 18th Memorial Service at the Anderson Tribute Center in Hood River was SRO - family, friends & philatelists.



PIPEX 2012 needs volunteers to help before, during and after the show.
If you can help, please contact Ron Sumner at rmsumner1@juno.com

The Album Page

Wins a Gold Award in The
2010 APS CAC Newsletter Competition



The APS Chapter Activities Committee Newsletter Competition is relatively new. It dates back to just 1999. The 2010 competition was divided into three groups - Class I Single page, Class II Multiple Page and Class III Federation Newsletters. There were four entries in the single page and 19 in the multiple page classes. There were no Class III entries for 2010. There were seven first time entries, six of which were in Class II - including our entry of *The Album Page*. Of all the first time entries, only *The Album Page* received a Gold - the top award. Only seven of all 19 Class II entries received the Gold Award.

Though my name is on this award, a large number of OSS members contributed to this success. From the numerous authors, photographers, constructive critics and even advertisers - to the membership committee and "mailing crew" - this award recognizes all of their efforts in producing our now "Award Winning" *Album Page*.

THE DUMPSTER DIVER CHRONICLES # 8

by John Lowell

This month's episode continues the waterboarding; I mean the exploration of obscure Japanese postal markings for no apparent reason other than to satisfy this writer's sense of personal grandeur.



Japan Sc. #73 With
Kobe Bota Cancel

At a kilo night a few years back I came across this otherwise common Japanese definitive with a very nice bota cancel from Kobe. Bota cancels are from hand carved wood cancelling devices. Not an unusual cancel but one in a different area of collecting postal markings. For those readers who have never attended a OSS kilo night, I suggest they give it a try. A doctoral candidate in psychology can base their entire thesis on the compulsive stamping behavior exhibited by our members on those nights.

Also found during a kilo event is this common stamp from around 1880. I noticed some unusual non postal markings on it (a "CBI" overprint) and decided it was worth 5 cents. The stamp sat around for a few years until lacking any other constructive ideas one day I decided to research the item. Under the topic of private control overprints in Japanese Philately magazine I found an article about overprints by the Commercial Bank of India. Another area of collecting! Certainly cheaper than trying to fill another blank in a album, which nowadays seems to cost at least \$50.



Japan Sc. #80 With
Private CBI Overprint

Besides finding endless amusement in low cost philately, the dumpster diver also relishes any opportunity to torment fellow

philatelists. A case in point is this national park issue from Japan. I bought it at an APS convention in Portland a few years back for the "Imperial Hotel" cancellation. I showed this stamp the Charles Neyhart, who was at the OSS booth. Turns out Charles had stayed at this very hotel and as a result of my find ended up spending a lot of time searching the dealer stocks in vain for a similar cancel. (Hint to Charles: search the national park issues)



Japan Sc. #462 With
Tokyo Imperial Hotel Postmark

Having threatened the reader with an episode on Chinese character cancels the dumpster diver, in a rare moment of rational thought has decided to exercise a bit of restraint. The native cancels will be saved for making future childish threats in a similar manner as North Korea.

And now in a move that will confirm those suspecting that the dumpster diver is a terrorist and/or anarchist, this episode will end with a stamp with markings completely unrelated to Japan, but continuing in the exclusive hotel digression. This stamp from Italy is cancelled at the famous luxury hotel, the Hotel Excelsior in Firenze, Italy. Searching for famous hotel cancels sounds like another cheap way to spend time at a stamp show.



Italy Sc. #253 With
Excelsior Hotel Postmark
(Actually, this stamp is a little out of place. It is not just another nickel stamp - its catalog value is in the \$ rather than ¢. Ed.)



HARMER-SCHAU AUCTIONS NORTHWEST, INC.

PROFESSIONAL APPRAISALS
OF STAMP
AND COVER COLLECTIONS

MEMBER : ASDA, NSDA, OSS
7940 SE Division #A
Portland OR 97206
(503) 788-3533

Visit our website at
www.harmerschau.com/oregon.html
For prices realized from our
last auction - March 27 2011



PIPEX 2012

A TRADITION CONTINUES!

May 11-13 Portland, Oregon

Details at: www.pipexshow.org or from
Michael Dixon at mdd10@att.net

PLAN FOR IT NOW!

NPL

Northwest Philatelic Library

Portland, Oregon



BOOK REPORTS

September-October 2011

Now Online at =>

www.nwpl.org

Unique Estate Appraisals

BUYING AND APPRAISING
STAMPS

David and Karen Bowers

(503)287-4200

Outside Portland 1-800-646-1147

1937 NE Broadway
Portland Oregon 97232
Hours: Tues.-Fri.: Noon-5 PM
Saturdays 10 AM - 3 PM

Website:

www.stampsandcoins.com

The September-October issue of Book Reports leads with an article by Charles Neyhart, "Modern Reissues of U.S. Classics," followed by an interview with auction agent Rance Curtis clarifying the role of the stamp auction agent and explain certain actions taken by an agent during an auction. A new "Stumper," Library News & Notes.

Plus the fourth installment of Janice Weinstock's donation of her Aerophilatelic library are included.

Book Reports is published only in electronic form on the NPL website: <http://www.nwpl.org>. Book Reports can be read on screen with adjustable sized type or downloaded as a PDF file. You can even send your email address to us at nwpl@qwestoffice.net and we will send it to you.



Salem AND Eugene Stamp Show Weekend

The Salem Show is Saturday September 17th at the Best Western Hiway Inn at 4646 N. Portland Rd. – just East of exit 258 off the I-5 in North Salem. The Show runs from 10-4:30 PM. There will be seven dealers. Free parking and admission. Contact person: Gary Tiffin (503-743-2306).

The Eugene Show is Sunday September 18th at the Masonic Center, Lodge 11, 2777 Martin Luther King Jr. Blvd, Eugene. (Directly across the street from Autzen Stadium.) There will be 10 dealers.

**190 Volume
World Wide
Stamp Collection**
Mint & Used Issues
on Vario Pages
\$20 - \$\$\$ per volume
at Rose City Stamp Fair
or call Bob Burger
503-390-9074

YOUR ADVERTISEMENT COULD BE DISPLAYED HERE!!

Advertising Rates

| | 6 Issues | 1 Issue |
|-----------|-----------------|----------------|
| 1/8 Page | \$ 17.50 | \$ 3.50 |
| 1/4 Page | \$ 30.00 | \$ 6.00 |
| 1/2 Page | \$ 55.00 | \$11.00 |
| Full Page | \$110.00 | \$22.00 |

Contact The Album Page Editor

Local Stamp Shows

Collector's Corner

Saturday - August 27th at OSS
All OSS members may come and have a table to sell or trade philatelic items.

Rose City Stamp Fair
Saturday - Aug. 13th at OSS
Attending Dealers

ASTAMPS
BOB BURGER
GARY TIFFIN
GRANT WILLIAMS

September 2011

| Sunday | Monday | Tuesday | Wednesday | Thursday | Friday | Saturday |
|--------|--|---|--|---------------------------------------|--------|---|
| | | | | 1 | 2 | 3 |
| 4 | 5 Labor Day Holiday | 6 | 7 | 8 | 9 | 10 Rose City Stamp Fair 10:00-4:00 |
| 11 | 12 OSS Board Meeting 7:00 PM | 13 OSS Meeting 8:00 PM Library opens 6:30 | 14 OSS Committee Dinner & Planning | 15 NPL Board Meeting 7:00 PM | 16 | 17 |
| 18 | 19 | 20 | 21 | 22 | 23 | 24 Collector's Corner 10:00-4:00 |
| 25 | 26 | 27 OSS Meeting 8:00 PM Library opens 6:30 | 28 | 29 | 30 | |

Upcoming OSS Events

2nd Tuesday - September 13th regular evening meeting. Program: "Fall Frolic" - pot-luck get together. Inside/Outside picnic. All are welcome - bring the family and any food dish of your choice. OSS will provide a variety of beverages and "chips".

4th Tuesday - September 27th regular evening meeting. Program: Kilo Night. Be prepared to search through a large number of stamps, covers and other philatelic gems.

Events Around Town

Westside Stamp Club: First Monday of each month (Except for Holidays) - 1 PM @ Tigard Senior Center. —**September 12th**
Beaver Stamp Club: Third Tuesday of each month, 1-3 PM @ Lutheran Church - 9800 SE 92nd Ave. Portland, OR. --**September 20th**

STOP BY OUR STORE IN VANCOUVER !!

WE INVITE YOU TO VISIT OUR STORE FRONT AT OUR OFFICES IN VANCOUVER AND BROWSE THROUGH THOUSANDS OF US AND WORLDWIDE SETS AND SINGLES, PLUS COLLECTIONS, SPECIAL OFFERS AND, OF COURSE, A WIDE RANGE OF COLLECTOR SUPPLIES.

FREE PRICE LISTS ALSO AVAILABLE.

SOME ITEMS YOU ARE LIKELY TO FIND WHEN YOU VISIT:

A broad assortment of US & Foreign collections and special pieces in a variety of prices.

Comprehensive stocks of Disney, Baseball, Entertainment, Princess Diana, World Wildlife Fund and a variety of foreign sets.

The US boxes you see at the shows, and some you don't see, are available to browse through on request.

Also, we have specials on Canada, Trust Territory, united Nations, U.S. Souvenir Pages, Covers and More.

Many basic collecting supplies with particular strength in Mounts, Stock books, Stock pages, Glassines, 102 cards plus albums, supplements and catalogs.



Of course, you can always find almost anything to do with Federal and State Ducks, Indian Reservation Stamps, Foreign Ducks, etc. You'll always find 100's of attractive Duck Prints that



you can look through-all priced at substantial discounts.

WE ALSO BUY STAMP COLLECTIONS!!

WE'RE EASY TO FIND!!

CALL IF YOU NEED HELP OR DIRECTIONS!



Public Hours:
8:00 AM - 4:00 PM
Monday-Friday.



Other hours by appointment. If you have special needs, we suggest you call first.

6300 NE St. James Rd., Suite 103B, Vancouver, WA

Local Phone 360-695-1391 Toll-free 1-800-545-4871 FAX 1-360-695-1616

Website: www.brookmanstamps.com Email => dave@brookmanstamps.com