

THE ALBUM PAGE

June 2011

President: Eric Hummel

Volume XXXIV, No. 6, Whole No. 319

Vice President: (Open Position)

Election Results

See Page 3 (OSS) & Page 12 (NPL)

PIPEX 2012

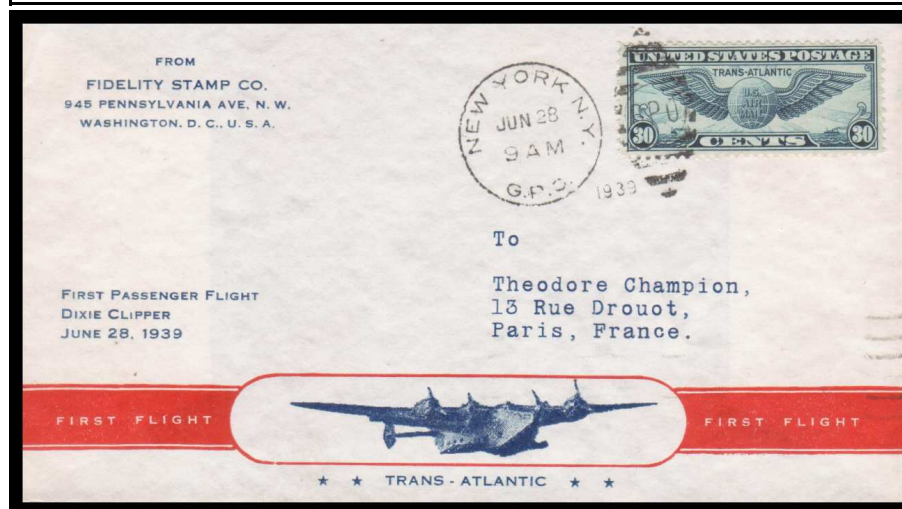
Is Just Around the Corner

(OK so its a BIG corner, but still, planning ahead is a good idea)

Those who volunteer early get their choice of the "Cushy" jobs

See Page 12

Cover of The Month



Specially Printed Cover by Fidelity Stamp Co.
for the First Passenger Flight by Pan American Airways
from New York to Marseilles - but the cover did not stop there.
See Page 10

THE OREGON STAMP SOCIETY

www.OregonStampSociety.org



OSS Board of Directors

President:

Eric Hummel 503-283-4770

Vice Pres.:

(Open Position) (—————)

Secretary:

Jerry Rottman 503-929-4389

Treasurer:

Steve Brandt (—————)

OSS Directors 2011-2012

Ula Mae Neligh

Paul Malan

Larry Spray

OSS Administration

Collectors Corner Manager:

Rod Steelman 503-820-9658

Property Manager:

Ula Mae Neligh 503-284-4294

Rose City Stamp Fair Manager:

Bob Burger 1-503-390-9074

Sales Manager:

Jim Correy (—————)

Album Page Editor:

Eric Hummel 503-283-4770

email => ephummel@easystreet.net

APS Representative:

Len Lukens (—————)

Oregon Stamp Society

4828 NE 33rd Ave
Portland OR 97211-7058

OSS Message Phone Number:
503-284-6770

The Album Page is published 12 times per year by the Oregon Stamp Society. A subscription to the Album Page is included as a part of the annual membership dues. For a membership application, write to the OSS at the above address.

Opinions expressed in features and columns in this publication are solely those of the authors and do not represent those of the Society. The OSS cannot be responsible for the accuracy of any information presented herein.

ABOUT THE CLUB

Regular meetings are held in the OSS Building, 4828 NE 33rd Ave. on the second and fourth Tuesdays of each month at 8 PM, unless otherwise stated in the monthly calendar.

The *Rose City Stamp Fair* is an official OSS function and is held at the OSS Building on the second Saturday of each month from 10 AM to 4 PM.

The *Stamp Collector's Corner* also is an official OSS Bourse, and is held on the fourth Saturday of each month from 10 AM to 4 PM.

Visitors Are Always Welcome

--- Contents ---

Articles

Program Notes - Around the World in 80 Covers	4-5
OSS and NPL Fund Raising Sale - July 30th	5
The Dumpster Diver Chronicles #5	6-7
Program Notes - Postal History of Jackson County	10-11

Columns

OSS News - Election of Officers	3
Closed Albums - Elizabeth Lake	3
Cover of The Month - RTW Covers	8-9
PIPEX 2012 - Volunteers Wanted!!	12
Calendar - June Events and Local Stamp Shows	14-15

Northwest Philatelic Library

Book Reports & NPL Election of Officers	13
---	----

Advertisers

Unique Estate Appraisals	12
Harmer Schau	14
Gary Hoecker	14
Brookman Stamps / Michael Jaffe	16

OSS News

At the General Membership meeting of May 24th, the four candidates for three separate positions, were voted upon by the Regular and Life members in attendance via a secret ballot.

The votes were tabulated by three members selected by President Albert Hanson. The following members were elected to serve two year terms:

President: Eric Hummel
Secretary: Jerry Rottman
Director: Larry Spray

CLOSED ALBUMS

ELIZABETH LAKE

Elizabeth passed away on April 28th. For many years Elizabeth had been and active and involved member of OSS. She held several positions within the Society, including President and Treasurer. She was also the Editor of the *Album Page* for many years. Her impressive collection of "Hands on Stamps" were the subject of at least two well received nightly programs presented by Elizabeth.

Program Notes - May 10th 2011
Around the World in 80 Covers
 Presented by Larry Craine

by Caroline Brandt

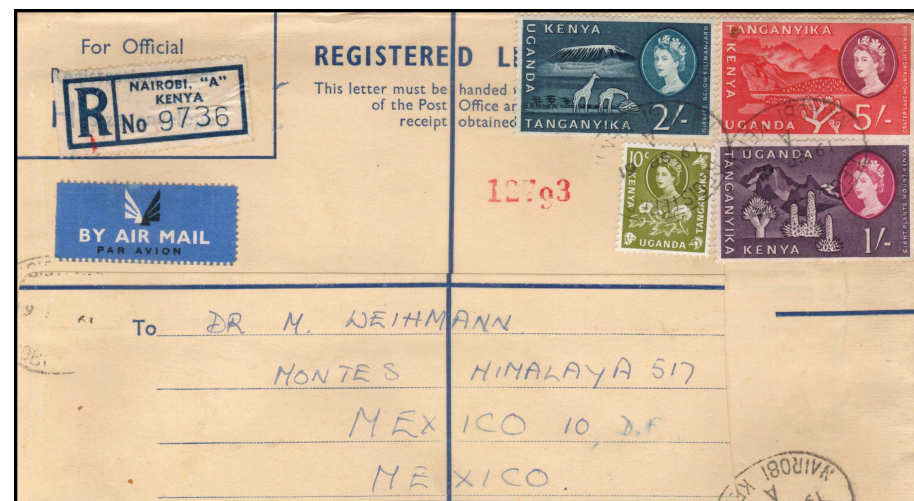
Len Lukens introduced his friend Larry Craine from Medford, Oregon to share some of his covers from his creative and award winning exhibits. The Medford Club strongly encourages members to exhibit their collections. Larry's wife first suggested choosing a simple topic: By The Numbers. Numbers on stamps from 1 to 100. In his exhibit one of these covers, features stamps with numbers 1 to 7 in different colors. Other topics he has chosen for exhibits are the F stamp series, and rates from \$0.01 to \$1.11. A low budget exhibit: "Skinflint Philately" comprised 3 frames at a total cost of less than \$100. It was awarded a Silver Bronze at a local show.

Larry emphasized the value of creativity in presenting the material in an exhibit. And also that it should reflect the fun you have in putting it together. It took 5 years to find the covers for the exhibit "Around the World in 80 Covers". He described this exhibit as covers going from one strange place to another. Each cover features at least two



One of the covers from his Around The World Exhibit. Egypt to Kenya. The illustration was made from Egyptian Stamps cut to the shapes of a boy and his dog after a successful fishing trip.

places but preferably more. He had a few dealers helping in the search.



Another "Around the World" cover - Kenya to Mexico - Registered Airmail.

Other subjects Larry has explored in his exhibits include "Return to Sender" and "Are we there yet?" The latter included the tracking of a cover going to the City of Granger with a number of states crossed out as it was forwarded eventually to the correct state. The exhibit included an imaginary dialog from the cover - wondering if and or when it would reach its destination. Curiosity drives the quest in what philatelically happened is presented as a mystery.

Another project he is working on is stamp shapes. He admits to driving judges crazy in trying to decide which category to place his exhibit. Turnabout is fair play as Larry will be a judge in Reno this summer. A teacher, you can see his desire to educate with his exhibit material. Enjoy the cover featuring stamps cut in the shape of a boy going fishing with his dog.

OSS and NPL Fund Raising Sale
July 30th
The Fifth Saturday in July
More details in the July *Album Page*

THE DUMPSTER DIVER CHRONICLES #5

by John Lowell

For this episode, the reader is invited to don their railroad coveralls for a nostalgic journey on the rails. (anyone remember the prank of opening a window as the steam locomotive enters a tunnel? Sadly, I do.)

For many years railroads carried post cars where mail was sorted. The railway postal services often picked up and delivered mail at various stations along a rail line. Rail related postal markings on stamps often include information such as the rail line, direction of the train and train number. There are also postal markings for special trains, such as used by British royalty during royal visits to their realms and I suspect there may be some special markings for some "whistle stop tours" by presidents. I have seen postal markings for train stations as well. Finding these rail cancels amongst the multitude of common stamps in a bargain bin is a economical way to spend time at a stamp show or at the OSS clubhouse. Otherwise, I find the cost of attending stamp shows to be in the \$25+ per hour range. I also found that whenever I chortle at a nice find people start moving away, creating plenty of elbow room for my ceaseless quest.



Australia
Sc. #

The NPL has a wealth of reference materials, including a number of books and publications devoted solely to collecting rail related postal markings. These have been invaluable in identifying rail cancels from various locales worldwide.

We begin our rail journey in the southern hemisphere with two Australian stamps. Found in bargain bins was the KGV 2 penny stamp with the initials TP from TPO for



Australia
Sc. #116

Travelling Post Office. Also found in similar circumstances was the 3 ½ d with a partial cancel for Adelaide Rail from 1955. Note that these two stamps are normally of minimal value, but with a rail cancel the value of these stamps increase dramatically to a dime or more! A find like this at a show makes the dumpster diver to have to calmly sit down - perhaps it's time to quit the Red Bull energy drinks. Moving east to the country of New Zealand is another cheap find with the one penny stamp with a "railway" cancel.



New Zealand
Sc. #175

Finally, we move to Europe with a nice "bahnpost" cancel from Germany, a country that one may find many nice rail cancelled stamps. The dumpster diver has found numerous German rail cancels at kilo night or in

bargain bins. However, as the rail cancel in Germany is much larger than normal postal cancels the search continues for a complete cancel on one of the larger stamps. That is why I have to look at every stamp in the offerings at collector's corner. Sorry for messing up those meticulously arranged stamps in the stock books.

Despite the hopes of most Album Page readers, the dumpster diver is not riding the rails out of these pages anytime soon, it will take more than the thinly veiled threats made so far. Being an oblivious sort, he will return to haunt these pages next month with more railroad drivels.



Germany
Sc. #418 with
selvage markings



Belgian Parcel Post and Railway Stamps w/Railway and Postal Cancels. (Ed.)

Cover of The Month Around The World Flight Cover(s)

The choice for Cover of The Month was inspired by Larry Craine's Program of May 10th. He related stories connected to the building of one of his exhibits - Around The World in 80 Covers - a parody on the 1956 film, based on the 1873 story by Jules Verne. It reminded me of a couple of covers I have related to around the world journeys.

The first, shown on this page, is a specially printed three part folded cover which traveled around the world in June and July of 1939. The first stage of the trip was via the Pan American Airways Dixie Clipper from New York to Marseille and on to the first destination in Paris. It was postmarked on June 28th for the First Passenger Flight to Europe. The second stage was Via Air Mail from Paris to Hong Kong. Probably flown by BOAC. The third stage was from Hong Kong to Washington DC. It



was postmarked July 13th and was flown via the Pan American Airways China Clipper to San Francisco and then onto Washington DC. Unfortunately the cover was only backstamped after the first stage of the trip. So the actual arrival date in DC is unknown - certainly less than "80 Days". The cover is actually in four parts - in this case the last part was unused. The top and bottom sections have flaps which allowed the folding of the cover in different ways, so that a new cover face could be used for each stage.

Using this method as a guide, in the late 1980's I was able to create

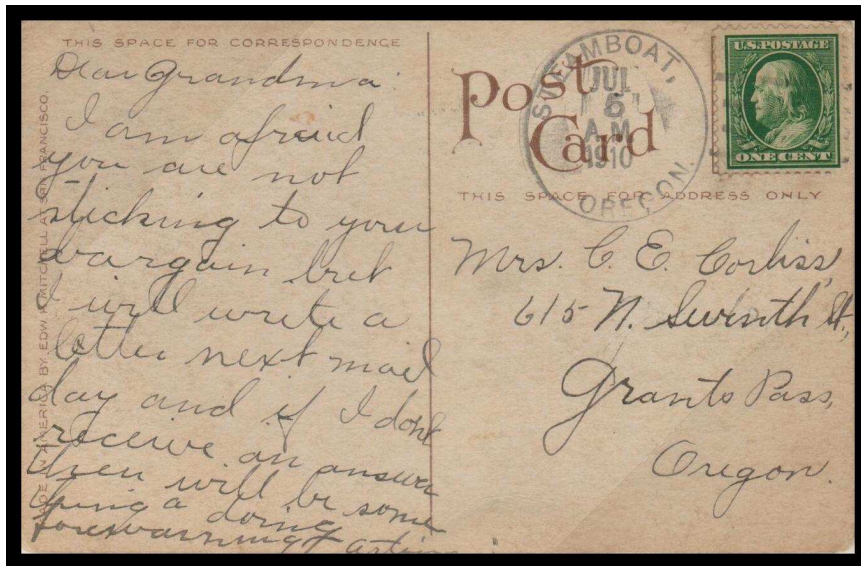


a cover which circled the globe on First Flights. The first stage was a March 30 1986 First Flight from Los Angeles to Munich on Lufthansa. The second was a May 10 1986 Lufthansa First Flight from Munich to Hong Kong. And the last stage was a July 1 1990 First Flight from Hong Kong to Los Angeles on Cathay Pacific Airlines. Since the cover had to be sent to starting points and returned from First Flight destination points, it actually flew much more than once around the globe.

Presented by Len Lukens

by Caroline Brandt

Len Lukens lived in Medford and knows the surrounding Jackson County very well. His personal experiences are as fascinating as the postal history of this area. He plans to make an exhibit of his covers, many are the only known example of the postmark. To establish a post office in an area, at least five people would sign a petition and one person had to agree to have their home or business as the site. One



Steamboat Oregon, July 10, 1910. Operated from 1888 to 1915.

such persistent petitioner lent the name to the post office: Persist. The Steinman post office was near the Siskiyou Tunnel 13 - the site of the last train robbery in the country. Len asked Herman Herst to speak to the Southern Oregon Philatelic Society and he agreed on one condition - that Len take him to see Tunnel 13 - he was an avid collector of Tunnel 13 Robbery mail. Mr. Herst was up in years and using a cane but intent on seeing this site. Unfortunately the road had been barricaded and Len and Herman had to walk the last 200 yards to the site. Herman got close enough to see the tunnel, asked to take a picture of

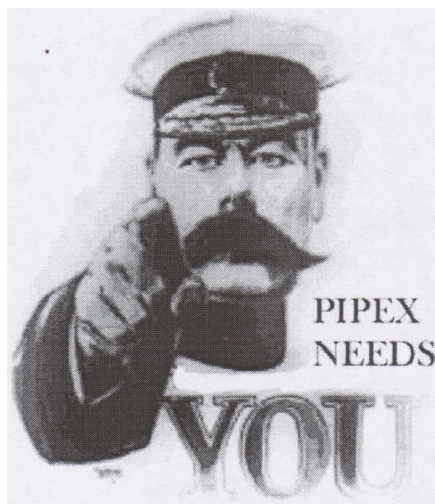
Len at the tunnel and smiled all the way home.



Watkins Oregon February 12 1913. Operated from 1893 to 1920.
It is now under the Applegate Reservoir

Many of the post offices no longer exist or have changed appearance radically. It is good to see the locations highlighted on the maps included with each cover on his exhibit pages.

Tunnel 13 was made famous when it became the site of the *Last Great American Train Robbery*. On October 11, 1923, Southern Pacific's Train 13, the Gold Special, pulling 13 cars, stopped at Tunnel 13 to test its brakes. There, the train was boarded by the three DeAutremont brothers - 19 year old Hugh and 23 year old twins Ray and Roy who planned to rob it of the \$50,000 rumored to be on board. But when U.S. mail clerk Elvyn Dougherty, locked inside the mail car of the Gold Special, refused to let the would-be robbers in, Roy set a dynamite charge to blow open the mail car door. The resulting, massive explosion demolished the mail car, killed Dougherty and destroyed most of the contents. If there had been any money on Southern Pacific's Gold Special that day, it was destroyed by the DeAutremonts themselves. In the ensuing fire, smoke and confusion, the panicked DeAutremonts killed the engineer Sidney Bates, fireman Marvin Seng and brakeman Coyle Johnson. The brothers managed to elude capture for 4 years, before being caught. (Ed.)



**PIPEX 2012 needs volunteers
to help before, during
and after the show.
If you can help, please contact
Ron Sumner at
rmsumner1@juno.com**

Unique Estate Appraisals

BUYING AND APPRAISING
STAMPS

David and Karen Bowers

(503)287-4200

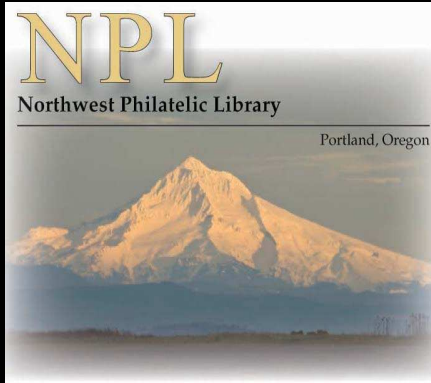
Outside Portland 1-800-646-1147

1937 NE Broadway
Portland Oregon 97232

Hours: Tues.-Fri.: Noon-5 PM
Saturdays 10 AM - 3 PM

Website:
www.stampsandcoins.com

PIPEX 2012
11, 12 and 13 May - Doubletree
Hotel, Lloyd Center, Portland, OR
**The Pacific Northwest
Premier Stamp Show**
Details at www.pipexshow.org or from
Michael Dixon (mdd10@att.net)
Don't miss it!
Plan now!!



BOOK REPORTS

May-June 2011
Now Online at =>
www.nwpl.org

NPL Election of Officers

At the General Membership meeting of May 24th, the four candidates for four separate positions, were approved by acclamation (voice vote), as follows:

President: Charles Neyhart

Treasurer: Wayne Holmes

Director #1: Darlene Lengacher

Director #2: Richard Averill

The May-June issue of the Northwest Philatelic Library's Book Reports is available on the NPL website www.nwpl.org

Be sure to read:

The lead article, by Greg Alexander, entitled
"Taxpaid Revenues and Special Tax Stamps."

This is followed by ***"Wardway Station, Northwest Portland,"***
(the back story of a post office at the Montgomery Ward building)
by Charles Neyhart.

An installment of Janice Weinstock's aerophilatelic library donation.

Plus the regular feature, Research Stumper,
to test your philatelic knowledge [and ours].

Book Reports is published only in electronic form on the NPL website: <http://www.nwpl.org>. Book Reports can be read on screen with adjustable sized type or downloaded as a PDF file. You can even send your email address to us at nwpl@qwestoffice.net and we will send it to you.



HARMER-SCHAU AUCTIONS NORTHWEST, INC.

PROFESSIONAL APPRAISALS
OF STAMP
AND COVER COLLECTIONS

MEMBER : ASDA, NSDA, OSS
7940 SE Division #A
Portland OR 97206
(503) 788-3533

Visit our website at
www.harmerschau.com/oregon.html
For prices realized from our
last auction - March 27 2011

Portland Spring Stamp Fest

(Gary Hoecker)

Saturday: 25 June 2011

10:00 am - 5:00 pm

Shilo Inn Convention Center

Willamette 1 Room

11707 NE Airport Way, Portland

Attending Dealers:

Bob Beall Gary Tiffin
Tom Kinberg Gary Hoecker
Ice Bear Stamps David Markowitz

Next Show: TBA

Portland Summer Stamp Fest
Shilo Inn

Phone: (503) 698-4128

Email: hoecker@teleport.com

Website: www.garyhoecker.com

Local Stamp Shows

Rose City Stamp Fair

Saturday - June 11th at OSS

Attending Dealers:

ASTAMPS
BOB BURGER
TERRY FERGUSON
GRANT WILLIAMS

Tentative Additional Dealers:

LARRY WEINSTOCK
GARY HOECKER
GARY TIFFIN

Collector's Corner

Saturday - June 25th at OSS

All OSS members may come and
have a table to sell or trade
philatelic items.

To reserve a table, please call the
Show Manager Rod Steelman
503-820-9658

June 2011

Sunday	Monday	Tuesday	Wednesday	Thursday	Friday	Saturday
			1	2	3	4
5	6 OSS Board Meeting 7:00 PM	7	8	9	10	11 Rose City Stamp Fair 10:00-4:00
12	13	14 OSS Meeting 8:00 PM Library opens 6:30	15	16 NPL Board Meeting 7:00 PM	17	18
19	20	21	22	23	24	25 Collector's Corner 10:00-4:00
26	27	28 OSS Meeting 8:00 PM Library opens 6:30	29	30		

Upcoming OSS Events

2nd Tuesday - June 14th regular evening meeting. Program: A Mini-Auction event. An opportunity for all members to sell a few items and to add to their collections. Bring up to 4-5 items, more or less - though no one really counts (a truck load might be too much). A popular activity - almost 50 lots were offered at the last Mini-Auction in April.

4th Tuesday - June 28th regular evening meeting. Program: Bill Geijsbeek with speak on "U.S. Postal Stationery".

Events Around Town

Westside Stamp Club: First Monday of each month - 1 PM @ Tigard Senior Center. —**June 6th**

Beaver Stamp Club: Third Tuesday of each month, 1-3 PM @ Lutheran Church - 9800 SE 92nd Ave. Portland, OR. --**June 21st**

STOP BY OUR STORE IN VANCOUVER !!

WE INVITE YOU TO VISIT OUR STORE FRONT AT OUR OFFICES IN VANCOUVER AND BROWSE THROUGH THOUSANDS OF US AND WORLDWIDE SETS AND SINGLES, PLUS COLLECTIONS, SPECIAL OFFERS AND, OF COURSE, A WIDE RANGE OF COLLECTOR SUPPLIES.

FREE PRICE LISTS ALSO AVAILABLE.

SOME ITEMS YOU ARE LIKELY TO FIND WHEN YOU VISIT:

A broad assortment of US & Foreign collections and special pieces in a variety of prices.

Comprehensive stocks of Disney, Baseball, Entertainment, Princess Diana, World Wildlife Fund and a variety of foreign sets.

The US boxes you see at the shows, and some you don't see, are available to browse through on request.

Also, we have specials on Canada, Trust Territory, united Nations, U.S. Souvenir Pages, Covers and More.

Many basic collecting supplies with particular strength in Mounts, Stock books, Stock pages, Glassines, 102 cards plus albums, supplements and catalogs.



Of course, you can always find almost anything to do with Federal and State Ducks, Indian Reservation Stamps, Foreign Ducks, etc. You'll always find 100's of attractive Duck Prints that



you can look through-all priced at substantial discounts.

WE ALSO BUY STAMP COLLECTIONS!!

WE'RE EASY TO FIND!!

CALL IF YOU NEED HELP OR DIRECTIONS!



Public Hours:
8:00 AM - 4:00 PM
Monday-Friday.



Other hours by appointment. If you have special needs, we suggest you call first.

6300 NE St. James Rd., Suite 103B, Vancouver, WA

Local Phone 360-695-1391 Toll-free 1-800-545-4871 FAX 1-360-695-1616

Website: www.brookmanstamps.com Email => dave@brookmanstamps.com