

# THE ALBUM PAGE

August 2011

President: Eric Hummel

Volume XXXIV, No. 8, Whole No. 321

Vice President: Bill Seymour

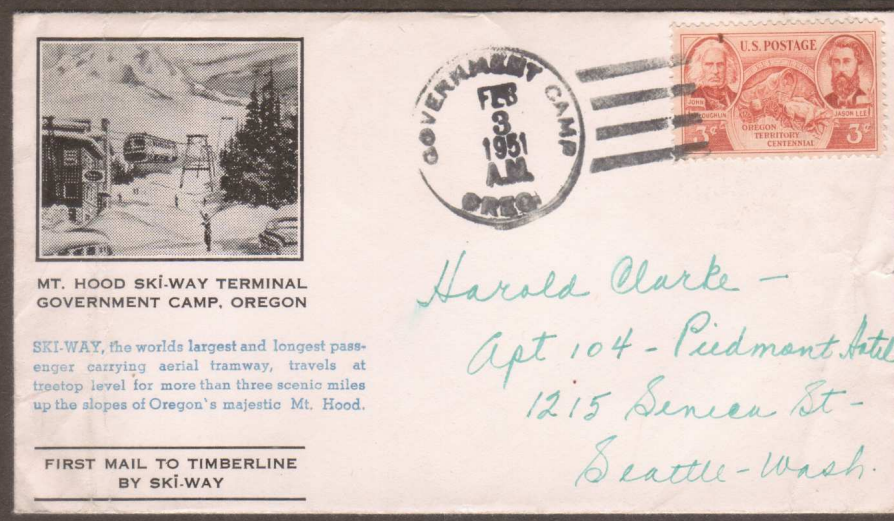
## Alaska Dog Team Mail and the Oregon Dune Mushers

See Pages 4-6

## OSS Annual Financial Statements

See Page 10-11

## Cover of The Month



## Flying Bus Mail First Mail to Timberline from Government Camp via the Ski-Way

See Page 12

**THE OREGON STAMP SOCIETY**

[www.OregonStampSociety.org](http://www.OregonStampSociety.org)



## OSS Board of Directors

### President:

Eric Hummel 503-283-4770

### Vice Pres.:

Bill Seymour 971-244-2278  
email => billsey@seymourfamily.com

### Secretary:

Jerry Rottman 503-929-4389

### Treasurer:

Steve Brandt (—————)

### OSS Directors 2010-2011

Ula Mae Neligh  
Paul Malan  
Larry Spray

## OSS Administration

### Collectors Corner Manager:

Rod Steelman 503-820-9658

### Property Manager:

Ula Mae Neligh 503-284-4294

### Rose City Stamp Fair Manager:

Bob Burger 1-503-390-9074

### Sales Manager:

Jim Correy (—————)

### Album Page Editor:

Eric Hummel 503-283-4770  
email => ephummel@easystreet.net

### APS Representative:

Len Lukens (—————)  
email => llukens@easystreet.net

## Oregon Stamp Society

4828 NE 33rd Ave  
Portland OR 97211-7058

OSS Message Phone Number:  
503-284-6770

*The Album Page* is published 12 times per year by the Oregon Stamp Society. A subscription to the Album Page is included as a part of the annual membership dues. For a membership application, write to the OSS at the above address.

*Opinions* expressed in features and columns in this publication are solely those of the authors and do not represent those of the Society. The OSS cannot be responsible for the accuracy of any information presented herein.

### ABOUT THE CLUB

Regular meetings are held in the OSS Building, 4828 NE 33rd Ave. on the second and fourth Tuesdays of each month at 8 PM, unless otherwise stated in the monthly calendar.

The *Rose City Stamp Fair* is an official OSS function and is held at the OSS Building on the second Saturday of each month from 10 AM to 4 PM.

The *Stamp Collector's Corner* also is an official OSS Bourse, and is held on the fourth Saturday of each month from 10 AM to 4 PM.

*Visitors Are Always Welcome*

## ----- Contents -----

### Articles

Program Notes - Dog Team Mail	4-6
The Dumpster Diver Chronicles #7	8-9
OSS Annual Financial Statements - Unaudited	10-11

### Columns

OSS News - Developing a Meeting Night Presentation	3
PIPEX 2012 - Volunteers Wanted!!	7
Cover of The Month - Flying Bus Mail	12
Calendar - August Events and Local Stamp Shows	14-15

### Northwest Philatelic Library

Book Reports	13
--------------	----

### Advertisers

Bob Dressler - Slightly Used Scott 2010 Catalogs	9
Unique Estate Appraisals	13
Harmer Schau	14
Gary Hoecker	14
Brookman Stamps / Michael Jaffe	16

## OSS NEWS

### Developing a Meeting Night Presentation

Thanks to Bill Seymour's loan/donation to OSS of a digital projector, we are now able to produce our own digital slide shows from scanned or digital photo images. The Dog Team Mail presentation was prepared in an afternoon using the flat bed scanner at the Clubhouse. Anyone who would like to develop a digital Presentation for a Tuesday Evening meeting, please contact Caroline Brandt to schedule time and assistance for your project.

## Program Notes - July 12th 2011

### Dog Team Mail

Presented by Caroline Brandt

Delivering the mail to Alaska has always presented a formidable challenge to the U.S. Postal Service. Letters, parcels, and supplies from the "Lower 48 states" often took weeks or months to reach their destinations. Steamships transported Alaska-bound mail north from Puget Sound to southeastern coastal towns. After reaching these towns, mail was carried to some sections of interior Alaska by river steamers and, later, by Alaska Railroad trains.

Dogs proved superior for the winter transport of mail. Dogs were capable of covering long distances, day or night, and could travel over frozen lakes and rivers and pass through dense forests. Mail dog teams varied in size, with eight to ten dogs the most common number for pulling a sled.

By 1901, a network of mail trails throughout Alaska was in use, including a system that followed almost the entire length of the Yukon River. The historic 2,300-mile Iditarod Trail was the main dog trail that carried mail from Seward to Nome. Over-night roadhouses served mail carriers, freighters, and other travelers who used dog sleds.



Censored Dog Team Mail carried between Golovin and Council. Cachet by well known artist M. Fay Muridge serviced by the prolific cover producer A. E. Koestler.

On average, dog teams pulled sleds containing between 500 – 700 pounds of mail, which meant that each dog had a load of up to 100 pounds (although they hauled less on the more challenging trails). Mail sacks usually weighed 50 pounds each. Rubber-lined waterproof bags were used to protect

precious mail from snow, rain, and mud. The dogs wore moosehide moccasins to protect their feet as much as possible from jagged pieces of ice.

By the 1930s some cover producers were regularly documenting the dog team mail routes. A. E. Koestler was one of the more prolific cover producers. He also produced many of the covers carried on the early Alaska Emergency Flights (generally Star Route mail service). By 1938 regular air mail service was established over FAM routes 15 and 16, which connected to Canadian routes at Whitehorse and to the lower 48 states in 1940 with FAM 20 to Seattle.



FAM 15-4 First Flight cover from Fairbanks to Juneau via Whitehorse. The privately printed flight cachet includes a paste-on photo showing a sled dog team watching a DC3, the future of air mail service to Alaska.

This FAM 15-4 First Flight cover illustrates the ending of the Dog Team Mail era and the beginning of regular Air Mail Service.

In 1973 the first Iditarod race was run between Anchorage and Nome. Beginning with the second race in 1974 mail was carried in the race by the various participants. Beginning with the third race, in 1975, the mail carried in the race was produced by the Nome Kennel Club.



For the second Iditarod, the USPS and Iditarod volunteers produced 55000 covers - 52000 were actually carried in the race.

North Bend to Florence Mail Run. "The event was conceived by Jim Tofflemire in 1977 after he ran the 1200 mile Iditarod Trail Race

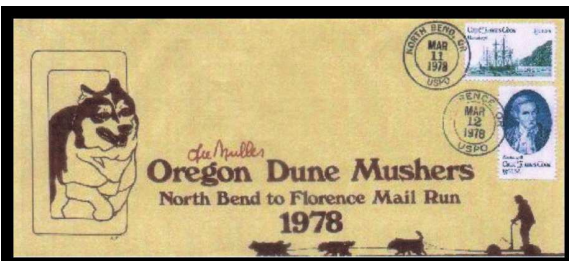


## Program Notes - Dog Team Mail, Continued

from Anchorage to Nome Alaska. It was a struggle to raise the money for the Iditarod and he sought to help others by combining a fund raising event with the challenge of the tour of the unique sled dog training grounds of the Dunes. It became a one of a kind event in the world of dog sled sports."

The event is not a race like the Iditarod. Running on sand is considered 3-4 times tougher on the dogs than pulling a sled over snow or ice in Alaska. The Mushers travel in groups or classes based on the number of dogs in their teams. This endurance run is held on the first weekend in March. The course covers 75 miles in two days with an overnight stop in Lake-

(The Editor willfully admits to exercising substantial literary and editorial license in the recounting of the Presentation by Caroline.)



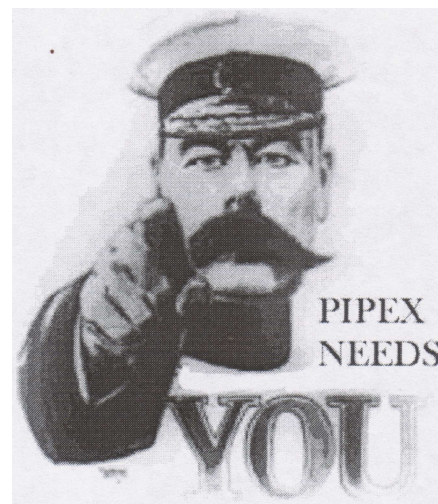
Signed cover carried on the First Mail Run from North Bend to Florence by Lee Muller. Cover designed by Laurel Tofflemire.



7 Dog Team with Musher Margaret Black guiding a steerable sled on wheels.



25th Anniversary Cover from the Mail Run of 2002 signed by many if not all of the participants.



**PIPEX 2012 needs volunteers to help before, during and after the show.**

**If you can help, please contact Ron Sumner at [rmsummer1@juno.com](mailto:rmsummer1@juno.com)**

**YOUR  
ADVERTISEMENT  
COULD BE  
DISPLAYED  
HERE!!**

### Advertising Rates

	6 Issues	1 Issue
1/8 Page	\$ 17.50	\$ 3.50
1/4 Page	\$ 30.00	\$ 6.00
1/2 Page	\$ 55.00	\$11.00
Full Page	\$110.00	\$22.00

*Contact The Album Page Editor*



## PIPEX 2012

**A TRADITION CONTINUES!**

**May 11-13 Portland, Oregon**

Details at: [www.pipexshow.org](http://www.pipexshow.org) or from Michael Dixon at [mdd10@att.net](mailto:mdd10@att.net)

**PLAN FOR IT NOW!**

## **THE DUMPSTER DIVER CHRONICLES #7**

*by John Lowell*

In the next two episodes, the dumpster diver will torment the reader with completely uninteresting and inane details of Japanese postal markings that are of such limited interest that the Album Page editor will finally realize that perhaps blank pages may have wider audience appeal. Knowing full well that this series is enough evidence for any judge to sign the commitment papers, the dumpster diver blithely proceeds.

Like a cunning spider, I will slowly lure the unsuspecting reader into the trap with some roman letter cancels on Japanese stamps, then the trap will be sprung with incomprehensible Japanese postmarks.



Sc. #269 Mount Fuji and Cherry Blossoms - inverted to better show the Osaka postmark.

The first was found for me by a fellow OSS member at a kilo night. The stamp and type of cancel are not unusual, what is unusual is the date of cancellation. The Japanese roman letter cancels were used only for non Asian destinations and this has a cancellation date of May 28, 1944, a time when little mail made it to such destinations. This stamp was probably for mail sent over the Siberian rails to a neutral destination. The dumpster diver has seen covers sent to Switzerland

about this time from Osaka as there was a Red Cross facility there. Anyway, an extremely late foreign mail usage for this stamp, all for 5 cents!

Also obtained at past kilo nights are a common older 2 sen definitive with a nice sock-on-nose Yokohama cancel from 1906



Sc. #96 - 2 Sen, design type A26 - inverted to better show the Yokohama postmark.

as well as a common 1950's 2 yen definitive with a partial cancel for Hakata, a seaport.



Sc. #92 1/2 Sen definitive issue with Seoul, Korea postmark.

A nice slightly scarcer cancel was found in a bargain bin, an old 1/2 sen definitive from the early 1900's with a Seoul cancel.

The 2 sen from the late 1930's features a nice roller cancel from Kobe, a major seaport. These are all highly collectible postmarks for the Japan specialist.



Sc. #425 - 2 Yen Rice Harvest issue with a partial Hakata postmark.



Sc. #259 Gen. Mare-suke Nogi 2 Sen issue with Kobe "roller" postmark.

Having made mountains out of these molehills of stamps, the dumpster diver leaves the album page reader with the question; doesn't this series violate the Geneva Conventions? I suggest one write to their congressional representative and propose some new legislation. Think this is silly? Just wait to the next segment of the Dumpster Diver Chronicles and I guarantee the reader will regret not having done so.

**FOR SALE**

**FULL SET OF SIX SCOTT 2010 CATALOGS — GENTLY USED.**

FOUR AVAILABLE NOW AND THE REMAINING TWO AS THE NEW ONES ARRIVE EACH MONTH.

2012 CATALOGS RETAIL FOR \$595.00

MY PRICE FOR THE USED SET IS \$195.00

Bob Dressler 503-281-4214

<p align="center"><b><i>OSS Annual Financial Statements</i></b>  <b><i>Unaudited (1)</i></b></p>
--

Revenue and Expenditure Statement  
For the Year Ended May 31 2011

Operating Revenue	
Membership Dues	\$ 4,046
Donations (2)	6,734
Meeting Sales	70
Album Page Advertising	390
Stamp Show Revenues	3,155
Consignment Sales	19,708
Miscellaneous Revenue	<u>168</u>
Total Operating Revenue	<u>34,271</u>
Non-Operating Revenue	
Building Rentals	4,758
Interest Income	<u>395</u>
Total Non-Operating Revenue	<u>5,153</u>
Total Revenues	<u>39,424</u>
Operating Expenditures:	
Administration	2,198
Album Page (Printing & Mailing)	4,150
Stamp Show Refreshments	288
Consignment Sales:	
Paid to Consignors	15,407
Cost of Sales	1,316
Miscellaneous Expenditures	259
Building Expenditures (Prorated to OSS Usage:71.8%)	<u>6,070</u>
Total Operating Expenditures	<u>29,688</u>
Non-Operating Expenditures:	
Building Expenditures (Prorated to Rental Usage: 28.2%)	<u>2384</u>
Total Non-Operating Expenditures	<u>2384</u>
Total Expenditures	<u>32,072</u>
Total Revenues over Expenditures	<u>\$ 7,352</u>

Balance Sheet  
As of May 31 2011

Cash and Equivalents	\$ 6,734
Investments (Savings & CDs)	55,101
Accounts Receivable - NPL	688
Notes Receivable - NPL (3)	5,000
Notes Receivable - PPE (4)	1,000
Land, Building & Improvements (5)	13,500
Total Assets	<u><u>\$ 82,023</u></u>
Liabilities	
Accounts Payable - NPL	352
Fund Balances:	
Restricted - Life Memberships	6,397
Restricted - Building Improvement Fund	29,821
Unrestricted	45,453
Total Liabilities and Fund Balances	<u><u>\$ 82,023</u></u>

Notes:

- (1) Unaudited, subject to small adjustments.
- (2) Includes a one-time donation from the estate of a philatelist from Alaska. Donation was added to the Building Improvement Fund.
- (3) Promissory Note due from the Northwest Philatelic Library. Matures December 31 2012. Proceeds to be returned to the Building Improvement Fund
- (4) Promissory Note due from Portland Philatelic Exhibitions. Matures June 2012.
- (5) Historical Cost of the OSS Clubhouse. Does not include past improvements (at this time). The current Retail Market Value according to the last Tax Statement from Multnomah County is \$335,000.



## Cover of The Month

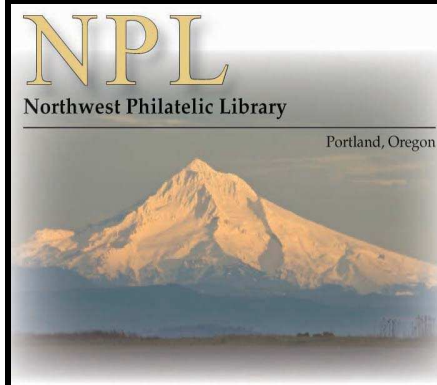
### Flying Bus Mail on Mount Hood

by Eric Hummel

Recently while going through a donation of covers to NPL, Larry Spray came across this month's Cover of the Month. The cover is postmarked from Government Camp and has a printed cachet explaining that it was carried on the first trip by the Ski-Way Aerial Tram up Mount Hood to Timberline on February 3 1951. Included within the cover was a photo of the Aerial Tram - literally a bus with wheels suspended from cables running for three miles at tree-top level from Government Camp to an upper terminal at Timberline.



The Ski-Way was designed and erected by the Pointer-Willamette Company of Portland, makers of *aerial* tramways for logging. It only operated for a couple of years. The 30 minute trip up to Timberline cost 75 cents. The self-propelled trams used 7 gallons of fuel to make a one way trip. Eventually a regular ground bus shuttle service costing 50 cents proved too much for the costly flying bus. The towers were removed from the mountain in 1961.



## BOOK REPORTS

July-August 2011  
Now Online at =>  
[www.nwpl.org](http://www.nwpl.org)

## Unique Estate Appraisals

BUYING AND APPRAISING  
STAMPS  
**David and Karen Bowers**

(503)287-4200  
Outside Portland 1-800-646-1147

1937 NE Broadway  
Portland Oregon 97232  
Hours: Tues.-Fri.: Noon-5 PM  
Saturdays 10 AM - 3 PM  
**Website:**  
[www.stampsandcoins.com](http://www.stampsandcoins.com)



The July-August issue of Book Reports leads with an article by Don Overstreet, "Thoughts on thematic Exhibiting," that incorporates lessons from Tom Current's award-winning exhibit *The Harp - From Cradle to Cloud*.

This is followed by "U.S. Security Grills - A Refresher" by Charles Neyhart.

And a new "Stumper" to solve for those with inquiring philatelic minds.



Library News and Notes and the third installment of Janice Weinstock's donation of her Aerophilatelic library are included.

***Book Reports is published only in electronic form on the NPL website: <http://www.nwpl.org>. Book Reports can be read on screen with adjustable sized type or downloaded as a PDF file. You can even send your email address to us at [nwpl@qwestoffice.net](mailto:nwpl@qwestoffice.net) and we will send it to you.***





# HARMER-SCHAU AUCTIONS NORTHWEST, INC.

PROFESSIONAL APPRAISALS  
OF STAMP  
AND COVER COLLECTIONS

MEMBER : ASDA, NSDA, OSS  
7940 SE Division #A  
Portland OR 97206  
(503) 788-3533

Visit our website at  
[www.harmerschau.com/oregon.html](http://www.harmerschau.com/oregon.html)  
For prices realized from our  
last auction - March 27 2011

## Portland Summer Stamp Fest

( Gary Hoecker )

**Saturday: 27 August 2011**

**10:00 am - 5:00 pm**

Shilo Inn Convention Center

Willamette 1 Room

11707 NE Airport Way, Portland

**Attending Dealers:**

Bob Beall Gary Tiffin  
Tom Kinberg Gary Hoecker  
Ice Bear Stamps David Markowitz

**Next Show: 15 October 2011**

Portland Stamp Fest

Shilo Inn

**Phone:** (503) 698-4128

**Email:** [hoecker@teleport.com](mailto:hoecker@teleport.com)

**Website:** [www.garyhoecker.com](http://www.garyhoecker.com)

## Local Stamp Shows

**Rose City Stamp Fair**  
**Saturday - Aug. 13th at OSS**

Attending Dealers

ASTAMPS  
BOB BURGER  
GARY HOECKER  
GARY TIFFIN  
LARRY WEINSTOCK  
GRANT WILLIAMS

## Collector's Corner

**Saturday - August 27th at OSS**

All OSS members may come and  
have a table to sell or trade  
philatelic items.

To reserve a table, please call the  
Show Manager Rod Steelman  
503-820-9658

## August 2011

Sunday	Monday	Tuesday	Wednesday	Thursday	Friday	Saturday
	1 OSS Board Meeting 7:00 PM	2	3	4 NPL Board Meeting 7:00 PM	5	6
7	8	9 OSS Meeting 8:00 PM Library opens 6:30	10	11	12	13 Rose City Stamp Fair 10:00-4:00
14	15	16	17	18	19	20
21	22	23 OSS Meeting 8:00 PM Library opens 6:30	24	25	26	27 Collector's Corner 10:00-4:00
28	29	30	31			

## Upcoming OSS Events

**2nd Tuesday** - August 9th regular evening meeting. Program: "An Evaluation of Catalogued "Types" of U.S. Stamps." by Charles Neyhart and Steve Chown.

**4th Tuesday** - August 23rd regular evening meeting. Program: "Lighthouses and Philately" by Steve Brandt.

**DON'T FORGET THE  
OSS & NPL FUND RAISING SALE  
JULY 30TH 9 AM TO 5 PM**

## Events Around Town

**Westside Stamp Club:** First Monday of each month - 1 PM @ Tigard Senior Center. —**August 1st**

**Beaver Stamp Club:** Third Tuesday of each month, 1-3 PM @ Lutheran Church - 9800 SE 92nd Ave. Portland, OR. --**August 16th**



## **STOP BY OUR STORE IN VANCOUVER !!**

WE INVITE YOU TO VISIT OUR STORE FRONT AT OUR OFFICES IN VANCOUVER AND BROWSE THROUGH THOUSANDS OF US AND WORLDWIDE SETS AND SINGLES, PLUS COLLECTIONS, SPECIAL OFFERS AND, OF COURSE, A WIDE RANGE OF COLLECTOR SUPPLIES. FREE PRICE LISTS ALSO AVAILABLE.

### **SOME ITEMS YOU ARE LIKELY TO FIND WHEN YOU VISIT:**

A broad assortment of US & Foreign collections and special pieces in a variety of prices.

Comprehensive stocks of Disney, Baseball, Entertainment, Princess Diana, World Wildlife Fund and a variety of foreign sets.

The US boxes you see at the shows, and some you don't see, are available to browse through on request.

Also, we have specials on Canada, Trust Territory, united Nations, U.S. Souvenir Pages, Covers and More.

Many basic collecting supplies with particular strength in Mounts, Stock books, Stock pages, Glassines, 102 cards plus albums, supplements and catalogs.



Of course, you can always find almost anything to do with Federal and State Ducks, Indian Reservation Stamps, Foreign Ducks, etc. You'll always find 100's of attractive Duck Prints that



you can look through-all priced at substantial discounts.

### **WE ALSO BUY STAMP COLLECTIONS!!**

**WE'RE EASY TO FIND!!**

**CALL IF YOU NEED HELP OR DIRECTIONS!**



Public Hours:  
8:00 AM - 4:00 PM  
Monday-Friday.



Other hours by appointment. If you have special needs, we suggest you call first.

6300 NE St. James Rd., Suite 103B, Vancouver, WA

Local Phone 360-695-1391 Toll-free 1-800-545-4871 FAX 1-360-695-1616

Website: [www.brookmanstamps.com](http://www.brookmanstamps.com) Email => [dave@brookmanstamps.com](mailto:dave@brookmanstamps.com)