

THE ALBUM PAGE

July 2014
President: Eric Hummel

Volume XXXVII, No 7 Whole No. 353
Vice President: Bill Seymour

The Philatelic Truck

See Pages 4-6

Bridal Veil Post Office At Risk

See Page 9

Cover of The Month



**Ryukyu Islands Sc. #UX2, #14(2), #15(3) January 12 1952
Air Mail Naha to USA**

See Page 4

THE OREGON STAMP SOCIETY

Founded in 1916.

APS Chapter #0068-008234

Member of the Northwest Federation of Stamp Clubs

www.OregonStampSociety.org



Oregon Stamp Society

4828 NE 33rd Ave
Portland OR 97211-7058

OSS Message Phone Number:
503-284-6770

The Album Page is published 12 times per year by the Oregon Stamp Society. A subscription to this award winning newsletter is included as a part of the annual membership dues (regular \$24, associate and youth memberships \$16). For a membership application, write to the OSS at the above address or visit our website at OregonStampSociety.org.

Opinions expressed in features and columns in this publication are solely those of the authors and do not represent those of the Society. The OSS cannot be responsible for the accuracy of any information presented herein.

ABOUT THE CLUB

Regular meetings are held in the OSS Building, 4828 NE 33rd Ave. on the second and fourth Tuesdays of each month at 8 PM, unless otherwise stated in the monthly calendar.

The ***Rose City Stamp Fair*** is an official OSS function and is held at the OSS Building on the second Saturday of each month from 10 AM to 4 PM.

The ***Stamp Collector's Corner*** also is an official OSS Bourse, and is held on the fourth Saturday of each month from 10 AM to 4 PM.

Visitors Are Always Welcome

OSS Board of Directors

President:

Eric Hummel 503-283-4770
email => ephummel@easystreet.net

Vice Pres.:

Bill Seymour 971-244-2278
email => billsey@seymourfamily.com

Secretary:

Jerry Rottman 503-350-2729

Treasurer:

Steve Brandt 503-297-7869

OSS Directors 2012-2014

Ula Mae Neligh
Paul Malan
Larry Spray

OSS Administration

Collectors Corner Manager:

Brian Riley 503-830-5217
email => Rileysan@hotmail.com

Property Manager:

Ula Mae Neligh 503-284-4294

Rose City Stamp Fair Manager:

Bob Burger 1-503-390-9074

Sales Manager:

Jim Correy (Tel. # Private)

Album Page Editor:

Caroline Brandt 503-297-7869

APS Representative:

Bill Seymour 971-244-2278

----- Contents -----

Articles

Book Review: The Philatelic Truck	4-6
Winnie the Pooh, OSS One Page	8-9

Columns

Cover of the Month	7
Bridal Veil Post Office at Risk	9
OSSF- Tax Deductible Donations	10
Calendar - July events + Upcoming Local and Regional Stamp Shows	14-15

Northwest Philatelic Library

Book Reports May-June	13
-----------------------	----

Advertisers

Panorama Stamps	11
Harmer Schau	12
Isaac Oelgart - Wanted: Vintage Philatelic "Tools"	12
PPE - PIPEX Fund Raising - Tax Deductible Donations	13
Brookman Stamps / Michael Jaffe	16

OSS NEWS

We liked the Book Review by Greg Alexander so much that we have asked to reprint from the NPL webpage for those who do not usually visit online. You may change your habits. Enjoy! To receive an email copy of "Book Reports" send your email address to NWPL@qwestoffice.net

Book Review: *The Philatelic Truck*, 1982, James H. Bruns, Bureau Issues Association, Inc.

By: Greg Alexander

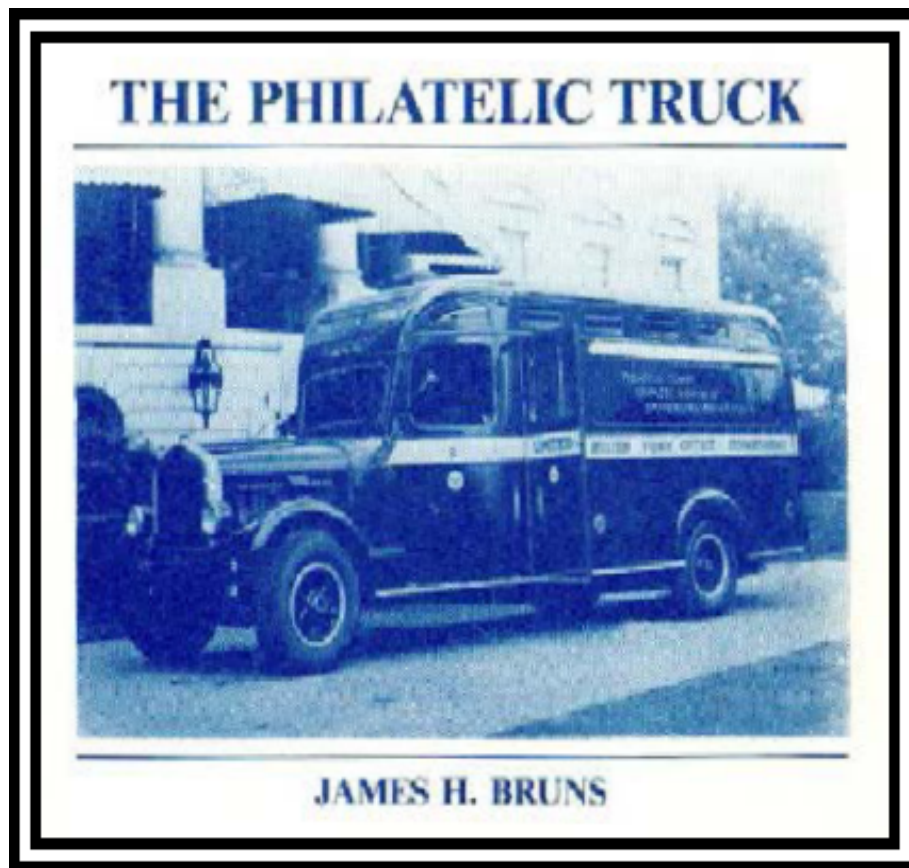
I recently added a cover to my collection, which prompted me to do a little research regarding the Philatelic Truck, a legendary vehicle that is likely to be at least somewhat familiar to most older collectors. The cover is “franked” with a Philatelic Truck souvenir sheet, on which a New York City meter was stamped with the date June 1, 1939. The sheet also shows an autograph of Ralph A. Davis.



James Bruns’ “The Philatelic Truck” offers a wealth of information about the history of the truck, how it came about, where it toured, and what it had to offer visitors. Supporting the story are dozens of photos and diagrams of the truck and its contents, along with the people who manned it. Ralph Davis was the chief supervisor of the truck, and traveled with it for the entire 28 months it was on the road, frequently sleeping inside as a de facto security guard. Bruns includes plenty of personal insight, gleaned from interviews with Davis about the philatelic journey.

The first public mention of the truck was in August of 1938 – a short article that appeared in *The New York Sun* describing the mission of the truck and the exhibits it would contain. The intent was

to “stimulate interest in stamp collecting among the youth of the country,” particularly those in rural areas, by offering a mobile philatelic museum. The truck would provide an opportunity to view specimens of every U.S. stamp issued, from the 1847 Franklin and Washington issue to the present. The book shows photos of each handsomely framed display, which included the Columbian and Trans-Mississippi issues, airmails such as the Graf Zeppelins, and hundreds of others sure to pique the interest of young visitors.



An intriguing piece of machinery was prominently featured in the center of the truck: a miniature Stickney printing press. The model press simulated printing the souvenir sheets (these were actually produced in large rolls specifically for this exhibit by the Bureau of Engraving and Printing). The “press” slowly rolled out and cut off

Book Review: The Philatelic Truck - Continued

asouvenir sheet for each visitor. Too slowly, it turned out, to effectively supply the large crowds that bustled past the displays, and the staff soon resorted to handing out precut sheets. The first year, these sheets were gummed, but when they turned up stuck to nearby windows, cars and the truck itself, Davis requested all further sheets be ungummed (which they were).

A good number of well-illustrated pages are devoted to the souvenir sheet, including initial design proofs and its philatelic use on cover. I was delighted to find a photo of a cover very similar to mine, dated on the same day.

Starting at the White House, the Philatelic Truck covered an extraordinary amount of territory between May 9, 1939 (Washington, DC) and Dec. 12, 1941 (San Diego, Calif.). As Bruns writes, "In all, the truck logged 20,750 miles, visiting 490 towns, villages and cities, and had 483,976 visitors." He includes a tour map and a detailed travel log and record of sales plotting out each visit and merchandise sold. Interestingly, in 1939 "A Description of United States Postage Stamps – Junior Edition" was printed for the tour and sold from the truck for 10¢ apiece. The NPL has a copy in its collection.

Alas, the Philatelic Truck never made it to the Pacific Northwest and saw very little of the western half of the country. The tour was scuttled following Pearl Harbor, when the U.S. entered WWII and the government shifted its attention to the war effort. The truck was hastily driven from Yuma, Arizona to California, the exhibits removed and returned to Washington.

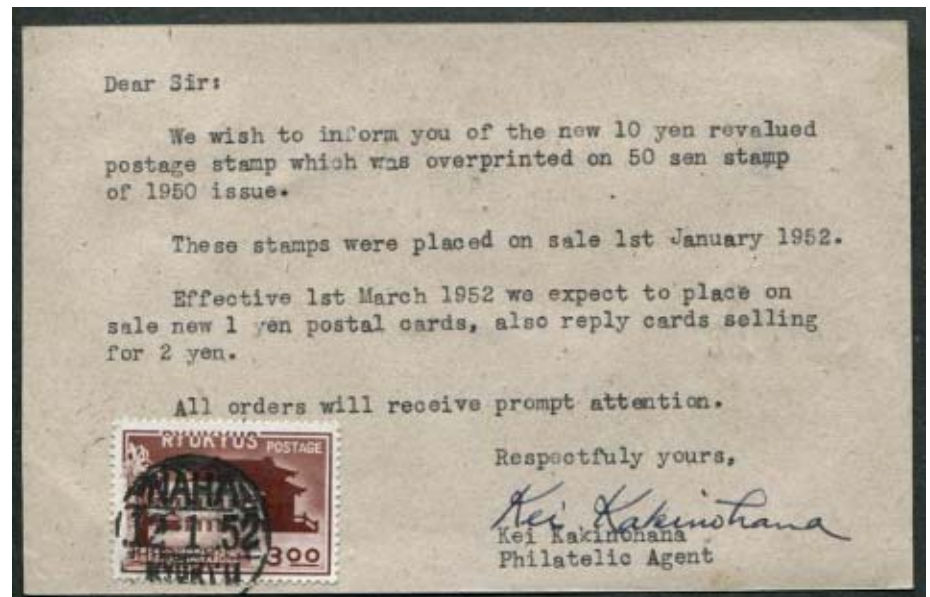
The Philatelic Truck itself met an ignoble fate; after being dismantled in Los Angeles it was sent north and was last seen rotting away behind the Rincon Annex of the San Francisco Post Office. A sad end to a historically significant vehicle that probably did more to inspire American stamp collectors than any other truck in the nation.

((Reprinted by permission from NPL Books Reports, May-June 2014.))

Cover of The Month

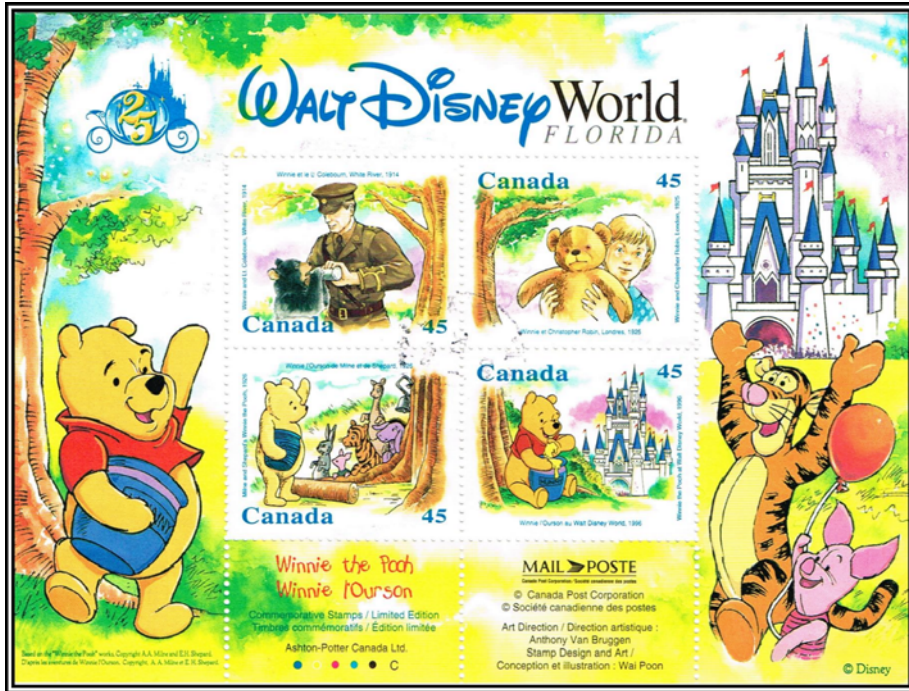
For Cover of the Month we usually select one that originates in Oregon. This month the cover is a postal card with additional franking from the Ryukyu Islands sent to Owen Wade (past member of OSS, avid cover collector and postal carrier at Colton OR for nearly 40 years). From the 1930s to the 1990s Owen would send IRCs to postal officials, diplomatic legations and some private individuals in order to have covers sent back to him from those countries. He often sent multiple requests to countries which responded to his requests and some put him on mailing lists for new issues.

This very nice postal card with additional franking from 1952, has an announcement by the Philatelic Agent at Naha about recent and upcoming issues. Owen never discarded any mail received from his overseas contacts - and luckily so for us. This postal card Sc. #UX2 with additional frankings of #14(2) and #15(3) now has a catalog value of \$195. An unusual item worthy of listing on eBay - which we did in June. It sold for \$210.51. I am no longer a big fan of eBay because it is generally a mature marketplace. But if you have something truly unusual, you may still get a good price for it there.



Winnie the Pooh

By Caroline Brandt



This souvenir sheet was issued by Canada in 1993. It coincided with the 25th Anniversary of Walt Disney World in Florida. The story of Pooh bear intrigued me and was submitted as a one page in the OSS one frame at PIPEX 2014. For ease of viewing by children it was placed in the lower section of the frame.

Winnie as well as Smokey the Bear was a real bear. Found in 1914 the orphaned black bear cub was adopted by Lieutenant Harry Colebourn in White River, Ontario, Canada. The Lieutenant, a veterinarian, named the bear Winnie, after his own home in Winnipeg, Manitoba.

Winnie traveled to England with Harry and became the unofficial mascot of the horse regiment. The bear was a favorite of the men. When the regiment was transferred to France, Winnie was loaned to

the London Zoo for safe keeping. After the war the popular, well-loved bear was officially donated to the zoo by Harry Colebourn.

Christopher Robin Milne named his toy bear after the Winnie he saw at the zoo. Pooh was the name of a swan in the zoo. A.A. Milne, Christopher's father in turn, named the characters in his book after his son, the toy bear and several other toy animals belonging to his son. Winnie the Pooh was first published in 1926. Christopher's toy Winnie is on display at what was the main branch of the New York Library which is now the Stephen Schwarzman Building. Interestingly, the illustrations by E.H Shephard in the book so accurately reproduce places in Ashdown Forest that they can be located and has become a tourist attraction. Ironically, A.A. Milne had hoped his fame would come from other writings but his anthropomorphic literature became the most popular.

The Bridal Veil Post Office at Risk

A public meeting to discuss the future of the Bridal Veil Post Office will be held on Tuesday, July 29th at 6 PM at the Franciscan Sisters Mansion in Bridal Veil. The address is 48100 E. Historic Columbia River Highway (Hwy 30) in Bridal Veil.

The editor would encourage all OSS members to attend the meeting and show our support for the historic Post Office. Over two hundred people attended the 100th Anniversary of the Bridal Veil Post Office in 2013.

Geri Canzler has represented the Post Office at several PIPEX shows and will be featured in an article for the USPS for her participation in PIPEX 2014.

According to Geri, the Franciscan Sisters Mansion is an elegantly restored historic building and is itself a good reason to come out for a visit. Take the Bridal Veil exit off I-84 into Bridal Veil and look for the big iron gates - or just follow all the other people and signs.

***IT'S OFFICIAL:
OSSF***

By Jerry Rottman

The Oregon Stamp Society Foundation, OSSF is now an officially exempt organization under Section 501 (c)(3) of the Internal Revenue Code. We can now accept donations which may be tax deductible for you, including cash, philatelic materials or other properties. Our goal is to promote philatelic activities primarily through support to the Oregon Stamp Society.

To obtain additional information on how to make your donations and receive a tax benefit please contact Jerry Rottman (jrottman@aol.com or 503-350-2729) or Ron Sumner (503-860-9162).

Send all address changes to:

**Oregon Stamp Society
OSS Membership Committee
4828 NE 33rd Ave
Portland OR 97211**

Or email to ==>> sheryll@sheryll.net

Donations to The OSS Store

The OSS Store is in need of your donations of philatelic materials and supplies. We especially have a demand for stamps, covers, mounts, manila stock pages and books, Vario/Hagner style pages. And hinges, hinges and more hinges. The proceeds of the sales of the donated materials all go to the OSS General Fund.

If you drop off a donation at the club, please label it for "The OSS Store". You may also contact the Sales Manager, Jim Correy, to make other arrangements. eMail ==>> ajcorrey@yahoo.com

Panorama

**Stamp
& Coin**

Win and Jeanette Ibert

Established 1971

Quality Stamps Bought & Sold

US & WW Stamps and Covers

Postal History, FFCs, FDCs

Scott, Lighthouse, Lindner & Showgard

Safe, White Ace; Albums and Supplies

BID BOARD closing date **Friday, August 28th 8PM**

Mon-Wed by appointment

Thurs-Fri 12-6, Sat 12-4

503 226-1211

735 SW St Clair

Portland, OR 97205

web: www.rdrop.com/~heinro

email: heinrich.auctions@gmail.com



HARMER-SCHAU
AUCTIONS NORTHWEST, INC.
 PROFESSIONAL APPRAISALS
 OF STAMP AND COVER COLLECTIONS

MEMBER : ASDA, NSDA, OSS
 7940 SE Division #A
 Portland OR 97206
 (503) 788-3533

Visit our website at
www.harmerschau.com/cgilocal/index.php
 For prices realized from our
 last auction - May 11th 2014

Wanted By Collector

Vintage, retro, older, used
 Watermark Trays, Color
 Guides, Philatelic tools,
 gauges, novelties and
 especially **Perf Gauges** of
 all kinds - specifically ones
 with stamp shop names on
 them.

Call, text 503 288 3606

or email

isaacoelgart@gmail.com

Summer Stampfest

(Gary Hoecker)

Saturday July 26th, 2014

10:00 am - 5:00 pm

Shilo Inn Convention Center
 Willamette 1 Room
 11707 NE Airport Way, Portland

Attending Dealers are:

Gary Hoecker	Grant Williams
Ice Bear Stamps	Gary Tiffin
Dave Markowitz	Bob Beall

***Please confirm attendance with
 your favorite dealer***

****Next Show Will Be December at
 the Shilo Inn***

Phone: (503) 698-4128

Email: hoecker@teleport.com

Website: www.garyhoecker.com

Portland Philatelic Exhibitions a 501(c)(3) Public Charity

Donate Your Stamps
 Earn a Tax Deduction

Collections - Duplicates
 US - Foreign

For Additional Information
 See the PIPEX Website at
<http://pipexshow.org>



NPL
 Northwest Philatelic Library

Portland, Oregon



BOOK REPORTS

The Current Issue is
 Now Online at =>
www.nwpl.org

The May-June issue of the Northwest Philatelic Library's "Book Reports" is available on the NPL website www.nwpl.org.

- Book Review: Postage Stamps As Coins by Dr. Satyendra K. Agrawal (reviewed by editor, following Postage Stamps as Currency)
- Book Review: The Philatelic Truck by James H. Bruns, reviewed by Greg Alexander
- Stumper of the Month: Answer
- New on Our Shelves
- Library Notes by Orlie Trier .

Book Reports is published only in electronic form on the NPL website: <http://www.nwpl.org>. Book Reports can be read on screen with adjustable sized type or downloaded as a PDF file. You can even send your email address to us at nwpl@qwestoffice.net and we will send it to you.

Regional Stamp Shows

July 2014

NSDA Stamp and Postcard Show, July 12-13, Boise, Id.
 Bourse, Boise Hotel and Conference Center,
 3300 Vista Ave. Contact: Bob Pyle (208)384-1400

Evergreen Stamp Club, July 19-20, Kent WA. Show
<http://evergreenstampclub.org/default.aspx>

August 2014

Strait Stamp Show August 9, Sequim WA. Show, Sequim
 Masonic Lodge South 5th & Pine
http://www.straitstamp.org/Strait_Stamp.html

APS Stamp Show 2014, August 21-4, Hartford CT. WSP
 Show
<http://stamps.org/Home>

Local Stamp Shows

Rose City Stamp Fair Saturday July 12th at OSS

Attending Dealers:

BOB BURGER GARY TIFFIN GRANT WILLIAMS
 PAUL RENNER LARRY WEINSTOCK BAYARD MENTRUM
 DON AVERILL

Call your favorite Dealer(s) ahead of time and ask them to bring items you are looking for to add to your collections

Collector's Corner

Saturday -July 26th at the OSS Clubhouse

If you haven't joined in on the fun in some time, come and see the extensive stocks of stamps and covers of our regular dealers:
 Brian Riley, Bob Burger, Grant Williams, Woody Rathbun and Paul Malan.

All OSS members may come and have a table to sell or trade philatelic items. And the fee is only 10% of what you sell (\$15 max).

July 2014

Sunday	Monday	Tuesday	Wednesday	Thursday	Friday	Saturday
		1	2	3	4	5
6	7 OSS Board Meeting 7:00 PM	8 OSS Meeting 8:00 PM Library opens 6:30	9	10	11	12 Rose City Stamp Fair 10:00-4:00 Library 10:00-2:00
13	14	15	16	17	18	19
20	21 NPL Board Meeting 1:00 PM	22 OSS Meeting 8:00 PM Library opens 6:30	23	24	25	26 Collector's Corner 10:00-4:00 Library 10:00-2:00
27	28	29	30	31		

Upcoming OSS Events

2nd Tuesday July 8th - Patriotic Clothesline - bring your inner patriot.

4th Tuesday July 22th - Kiloware Night - one of our most popular events.

Events Around Town

Westside Stamp Club: First Monday of each month - 1 PM @ Tigard Senior Center. —**July 7th**

Beaver Stamp Club: Third Tuesday of each month, 1-3 PM @ Lutheran Church - 9800 SE 92nd Ave. Portland, OR -**July 15th**

STOP BY OUR STORE IN VANCOUVER !!

WE INVITE YOU TO VISIT OUR STORE FRONT AT OUR OFFICES IN VANCOUVER AND BROWSE THROUGH THOUSANDS OF U.S. AND WORLDWIDE SETS AND SINGLES, PLUS COLLECTIONS, SPECIAL OFFERS AND, OF COURSE, A WIDE RANGE OF COLLECTOR SUPPLIES.

FREE PRICE LISTS ALSO AVAILABLE.

SOME ITEMS YOU ARE LIKELY TO FIND WHEN YOU VISIT:

A broad assortment of U.S. & Foreign collections and special pieces in a variety of prices.

Comprehensive stocks of Disney, Baseball, Entertainment, Princess Diana, World Wildlife Fund and a variety of foreign sets.

The U.S. boxes you see at the shows, and some you don't see, are available to browse through on request.

Also, we have specials on Canada, Trust Territory, United Nations, U.S. Souvenir Pages, Covers and More.

Many basic collecting supplies with particular strength in Mounts, Stock books, Stock pages, Glassines, 102 cards plus albums, supplements and catalogs.



Of course, you can always find almost anything to do with Federal and State Ducks, Indian Reservation Stamps, Foreign Ducks, etc. You'll always find 100's of attractive Duck Prints that



you can look through—all priced at substantial discounts.

WE ALSO BUY STAMP COLLECTIONS!!

WE'RE EASY TO FIND!!

CALL IF YOU NEED HELP OR DIRECTIONS!



Public Hours:
8:00 AM - 4:00 PM
Monday-Friday.



Other hours by appointment. If you have special needs, we suggest you call first.

6300 NE St. James Rd., Suite 103B, Vancouver, WA

Local Phone 360-695-1391 Toll-free 1-800-545-4871 FAX 1-360-695-1616

Website: www.brookmanstamps.com Email => dave@brookmanstamps.com